

WAIPU COVE RESERVE(S) BOARD

Minutes Monday 18th January 7pm 2016

Waipu Cove Surf Life Saving Club

ALL WELCOME

AGENDA (E & OE)

PRESENT: P. Baker, R. Pullan, J. Henderson, E.Cook, R. King
E. Harrington (Minutes Secretary)

APOLOGIES:

ATTENDING: K.Baker, A.Trist, A.McCulloch, R.Stolwerk

MINUTES OF THE LAST MEETING:

R.Pullen/R.King **Carried**

MATTERS ARISING:

CORRESPONDENCE:

Inwards:

- 3/12/15 WCSLSC – Wedding Staff for John Buchanan and Sheree Carter
- 5/12/15 WCSLSC – Funding Shortfalls to affect lifeguard services
- 5/12/15 – **George Wong** – Accommodation for 6 guests
- 14/12/15 – **Rick Stolwerk** – Weed at Waipu Cove
- 14/12/15 – **Phani Chaitanya** – Waipu Cove BBQ Area
- 15/12/15 – WCSLSC – Highland Games and Christmas Float helpers needed
- 21/12/15 – WCSLSC – Club Day
- 28/12/15 – **Anton Trist** – Full page article in the Advocate
- 2/1/16 – **Anton Trist** – Letter from WDC regarding the Waipu Cove flooding option report community meeting
- 9/1/16 – **Angus McCulloch** – Common sense regarding boat parking
- 9/1/16 – **Marilyn Cox Bream Bay News** – Comment on letter to the editor from Angus McCulloch regarding the noticeboard on the Reserve
- 11/1/16 – **Angus McCulloch** – Communicating with the public

Outwards:

- 14/12/15 - **Rick Stolwerk** – Weed at Waipu Cove
- 14/12/15 – **Phani Chaitanya** – Waipu Cove BBQ Area
- 9/1/16 – **Marilyn Cox Bream Bay News** – Comment on letter to the editor from Angus McCulloch regarding the noticeboard on the Reserve

MOVED Inwards correspondence received outwards approved

P.Baker/E.Cook **Carried**

REPORTS:

- **Management report (attached)**
- **Financial report (attached)**
- **WCSLSC Report** – SLS Northern Region day went well. Thanks to camp management for allowing everyone to park on the far end grass reserve. Next year the New Zealand championships will be held at the Cove. The surf club really appreciated the removal of the weed.

MOVED that all reports accepted

R.King/E.Cook **Carried**

GENERAL BUSINESS:

- **Removal of the weed** –Board felt it is only right to pay ~~them~~ local contractors for their time. The Cove café provided a breakfast free of charge to show their appreciation also. Other meals for the contractors at cost (50%)
- **Flood Risk presentation by WDC to local community** – John attended the meeting which was informative and helpful. The council were looking for input from the community which they received.
- **New Cabins** – Proposals have been received from two short list architects. Discussions to continue amongst the Board and then feedback to be given. The plan is to carry out the development within the next 2 years. Anton to speak to Adam from Maxar to develop the next stage of planning and to provide critical dates. The sites are to be prepared for development during the off season this year. Drainage consultants required. Anton to get prospective dates for roading etc.
- **Minutes Secretary** – Replacement for Emma Harrington to be recruited. Emma will do full hand over with the person who takes over the position. Peter suggested that Belinda Hopkins would be a

perfect fit for the position, Emma and the rest of the Board in agreement. Anton will discuss this with her.

- **Camp ground cancellations and decreases in booking for next year due to weed** – It is too early at this stage to tell the effects on rebooking for next year due to the weed this year. Year to date the income is up for December and there remains to be a waiting list of people willing to take up the sites of others who have cancelled.
- **A gesture of appreciation for Andre La Bonte**– The Board really appreciates Andre’s support and assistance in the removal and investigation into the weed situation at the Cove. Discussion around the best way to formally recognise his contribution.

Upcoming events on the reserve and local area

- **Waipu Saturday Market:** First Saturday of the Month in Presbyterian Church Hall 9-1pm
- **Waipu Boutique Sunday Market & Café:** 2nd Sunday of the Month, Waipu Coronation Hall 9-1pm
- **Waipu Street Market** - Saturdays of long weekends 9-1pm
- **Waipu Antiques and Collectables Fair** – Sunday of Long weekends 9-4pm

Upcoming Surf Life Saving Events Waipu Cove SLSC

16th January SLS Northern Region – Junior Carnival WAIPU COVE;

17th January SLS Northern Region - IRB Carnival WAIPU COVE;

5th & 6th February Northern Junior Surf Champs – Orewa;

13th February BP Surf Rescue North Island Champs – WAIPU COVE;

20th & 21st February – Northern Region Champs at Omaha March;

3rd to 6th March Ocean’s Under 14 Champs;

17th to 20th March SLSNZ National Champs – Ohope

Future Meetings – 15th Feb, 21st March

Meeting Closed at 7:40pm

Managers’ Report – December/January 2016

December and January have been very busy and eventful here at the camp. December was busy with getting the camp prepped and organised for the usual summer rush. December also saw the return of the red seaweed, which has also come a second time in early January. The weather has been less than ideal, making life interesting for campers and leaving the camp with some vacant sites at times, which is not the norm here over the busy period.

In early December we had a fire training session with all staff, where everybody learned what to do in case of a fire of any sort, and how to use a fire extinguisher/fire blanket. This training was conducted on site by Building and Fire Services who look after our alarm testing and fire compliance.

Ecolab chemical training with all cleaning staff also took place in December. This was a refresher for some and completely new for those cleaners that were just about to start work over the summer. This training gives the staff the correct knowledge to use the chemicals safely and effectively.

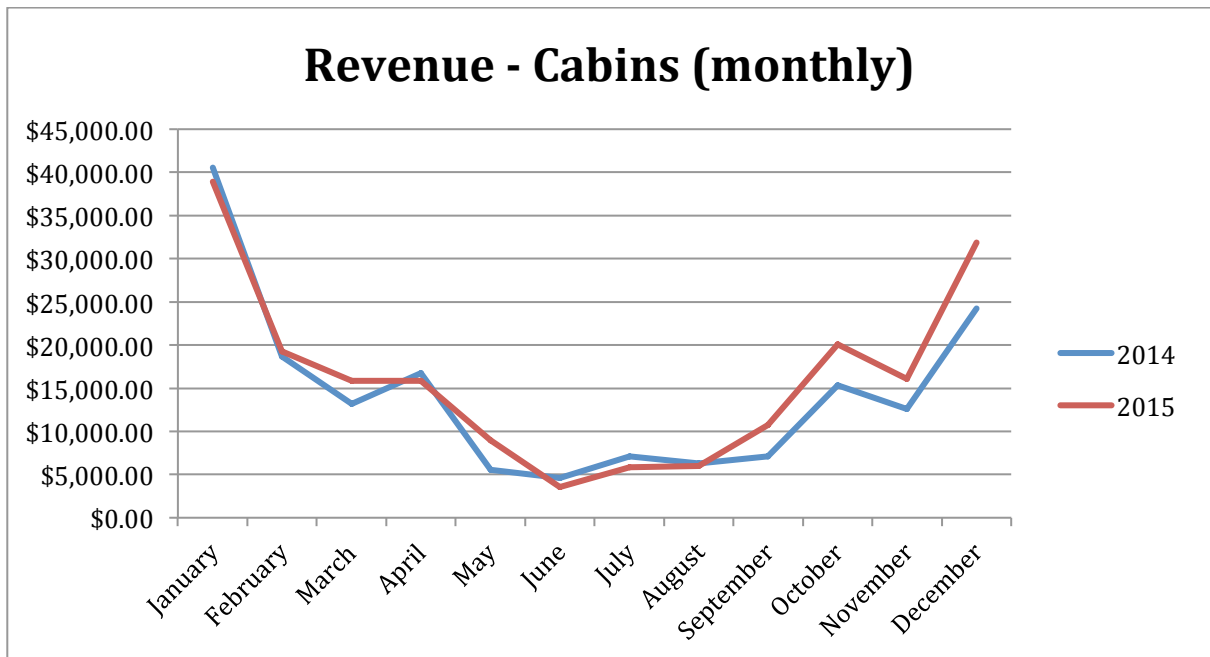
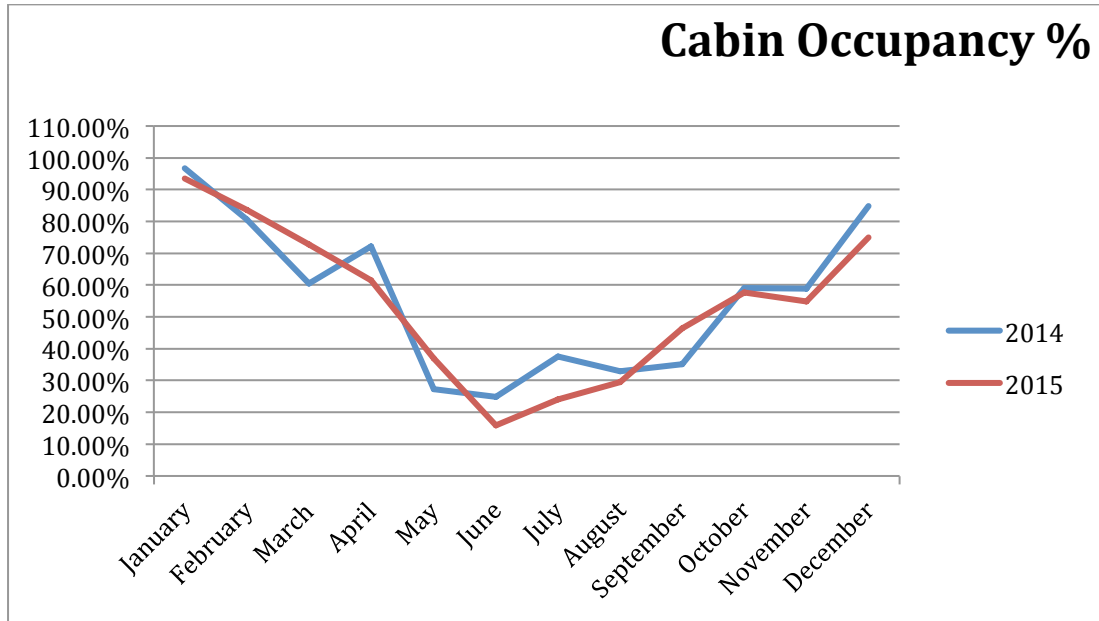
WDC came and flushed out the stream on the 9th of December to clear it of any weed. But then we had the red seaweed return again in mid-December, similar to previous years but far worse this time around. The first lot arrived in December and seemed bad enough at the time as it was certainly worse than it had been in the past. Thanks to the efforts of some locals and the help of Craig Brown we were able to use our existing consent for dune work and beach grooming to organise a clean-up of the beach before the busy season began. However the seaweed returned again far worse than ever in early January during peak holiday time, and once again was removed by the local farmers over a three day period. We cannot thank these guys enough because without their help this would have been a disaster. A news crew from TV3 came and filmed the weed at its peak and then the removal of it. This has put the spotlight on the issues we are facing which may be a good thing.

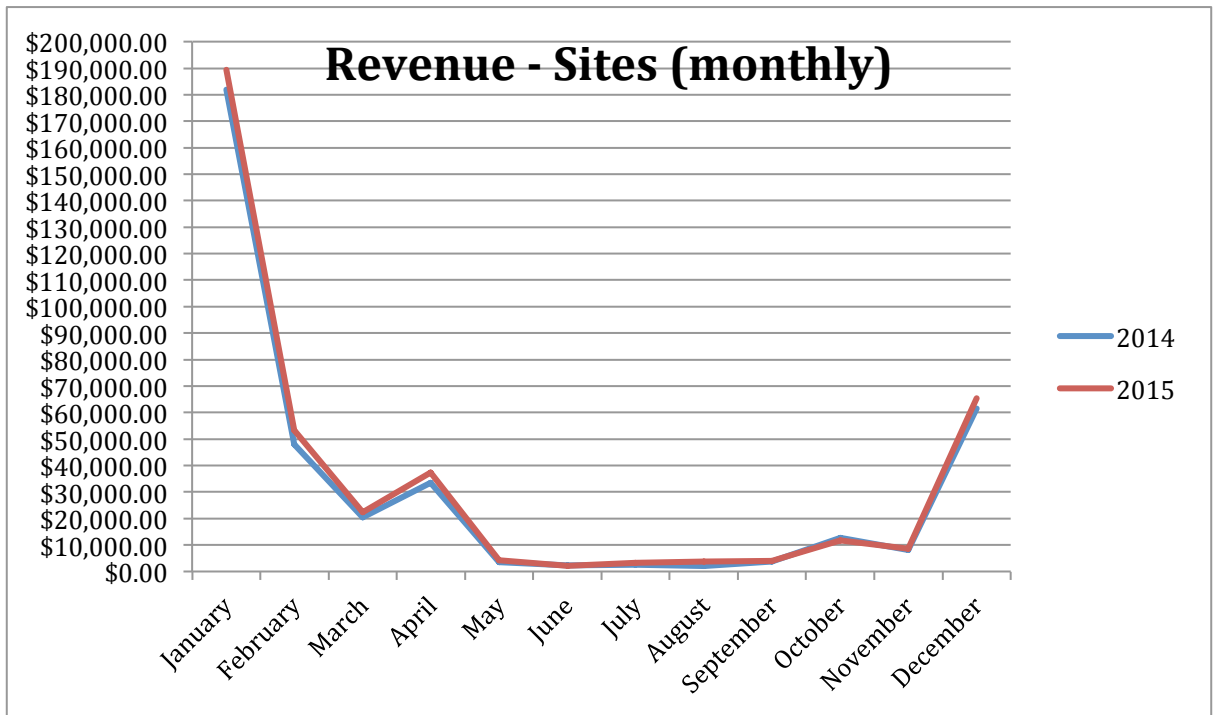
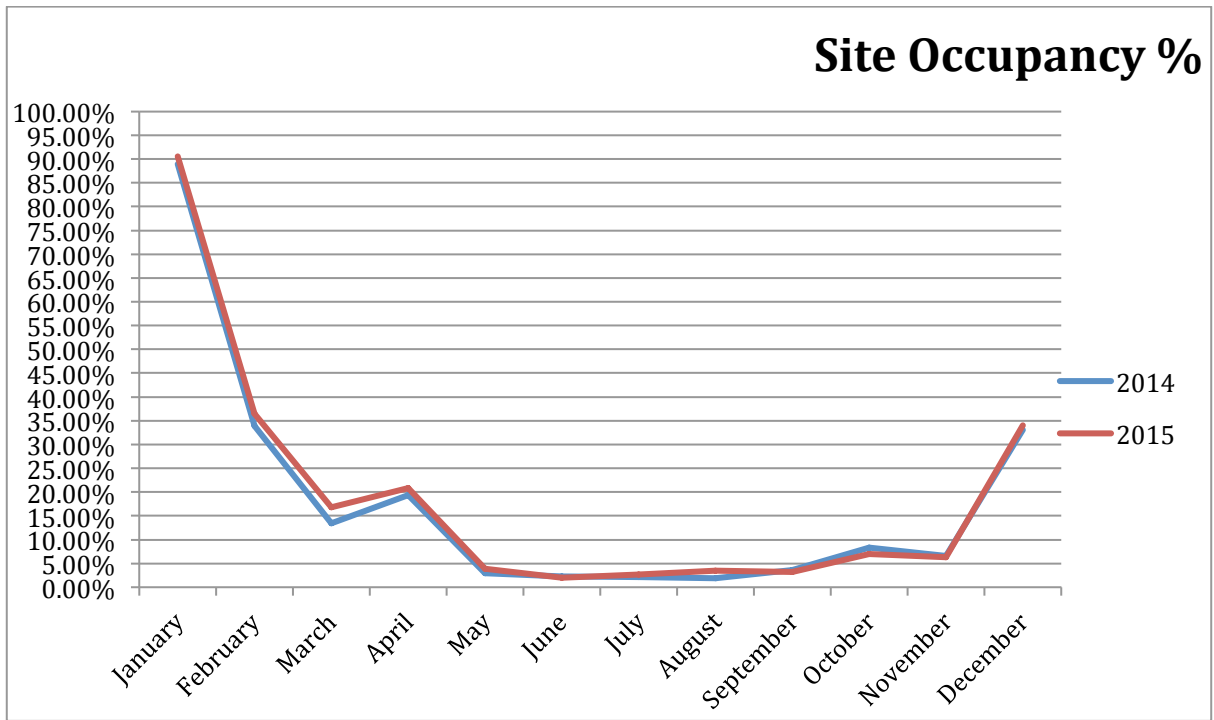
On a more positive note, the free body boards have been a success and enjoyed by many campers. Those who are interested in using these go and speak to a patrolling lifeguard who will brief them on how to use it safely i.e between the flags and only when there are lifeguards patrolling. It’s nice to be able to offer this experience to our guests.

Over Christmas, Northpower data logged our power consumption to check what capacity we have remaining. This was to see if we will be able to support the proposed new cabin cluster with the current infrastructure. We are still waiting to see what the outcome of this is and will provide an update once we have all the information.

Prior to Christmas we had a new oven installed in lock block kitchen, so now all blocks have cook top hobs and ovens. We are looking at upgrading the current Fridges/freezers to larger commercial ones next year, as we think we need more fridge space and typical domestic fridge/freezers aren’t durable enough in a high-use environment. Two cabin concept drawings have been forwarded to the board for feedback. Once we have this we can decide which plans to go with.

December 2015 Occupancy and Revenue





Cabin revenue increased YOY compared to December 2014, as did site revenue. Although overall cabin revenue increased by over \$7000, the occupancy level dropped slightly. This is due to the two extra cabins we have this year. Site occupancy and revenue were slightly increased.

December financials:

	December 2015	December 2014	Comments
Revenue	\$ 160,112	\$ 153,920	Revenue up \$6k on LY
Payroll	\$ 33,665	\$ 28,075	Up \$5k on LY

Expenses	\$ 83,952	\$ 82,607	In line with LY
Surplus/deficit	\$ 76,447	\$ 72,750	\$4K increase on LY

Financial report December 2015

Current debtors: \$7,232 (this is made up of ASH and 3rd party website providers) we expect to receive all these funds within this financial year

Value of future bookings held in our system with expected revenue of \$311,162

Net profit up \$4k compared to last year

Revenue per ASH: \$378

Revenue per camp site: \$622

Revenue per cabin: \$2,640

Actual funds available in all bank accounts 14/01/2016 = \$401,000

Revenue:

Up \$6k on last year, self contained cabins up \$8k on last year, all other revenue's in line with last year.

Expenses month

In line with last year. Foreshore renourishment \$2,700 which is for weed removal from the beach