

## WAIPU COVE RESERVE(S) BOARD

18<sup>th</sup> June 2018, 7pm.

Camp Waipu Cove all-weather room.

**ALL WELCOME**

### AGENDA (E & OE)

#### PRESENT:

#### APOLOGIES:

#### MINUTES OF THE LAST MEETING:

#### MATTERS ARISING:

#### CORRESPONDENCE:

#### Inwards:

23/05/2018 – Stan & Winda Good – ASH site plan application

30/05/2018 – Victoria Randall, NRC – Location of tsunami warning sign

#### Outwards:

23/05/2018 – Stan & Winda Good – Re. ASH site plan application

#### REPORTS:

- Management report
- Financial report
- WCSLSC Report (verbal)

#### GENERAL BUSINESS

- Resource consent for new cabins
- Dune reshaping continuation

#### Upcoming events on the reserve and local area

- **Waipu Saturday Market:** First Saturday of the Month in Presbyterian Church Hall 9-1pm
- **Waipu Boutique Sunday Market & Café:** 2nd Sunday of the Month, Waipu Coronation Hall 9-1pm
- **Waipu Street Market** - Saturdays of long weekends 9-1pm
- **Waipu Antiques and Collectables Fair** – Sunday of Long weekends 9-4pm

#### Upcoming Surf Life Saving Events Waipu Cove SLSC

#### Future Meetings –

Meeting Closed at

## Managers' Report June 2018

June has been very quiet so far, even with Queens Birthday, which was a very wet weekend. There has not been a lot of action to report on, especially as there is a shorter than normal gap between meetings.

The tennis court is finally complete and ready for use. The fencing was completed on the 12<sup>th</sup> of June, and a lock installed for the gate. We are still awaiting the arrival of the basketball hoops. Next we will begin to landscape the surrounding area, so it will be looking smart come summer time. Tennis balls and racquets have been purchased, which will be available for hire by those using the tennis court.

We have made further progress with the new website. Currently, we are proofing the content and have already selected the photos we will be using. Evosuite have been working on the general design. They have nailed down how we want this to look, which is clean, modern and user-friendly. So far, it's looking very good. They will have the first mock up of the entire website available by the end of the month, which we will then review and make any necessary changes before it goes live.

Our solar is now fully operational, Solar Group have recently completed the work that was needed to switch our import/export meter to live.

Further dune works have been scheduled for July with the help of the Northern Regional Council. This work will be a continuation from the area previously completed. A further 100 metres will be planted. We also have pencilled in another

planting day with Waipu Primary School on the 8<sup>th</sup> of August. The Cove Café have generously offered to pay for the digger work involved.

This month we have been inducted into the Trip Advisor Hall of Fame for receiving a Certificate of Excellence for the 5 consecutive years. We are thrilled about this, as only 5% of businesses on Trip Advisor will receive this award. It is only possible with a team effort, so we want to acknowledge our amazing staff who have worked together to achieve a consistently high standard of customer service.

In a couple of months our kitchen cabins 1 to 5 are being refurbished. All will have new vinyl planking laid on the floor, new kitchen and cupboards installed, and a coat of paint to refresh the inside.

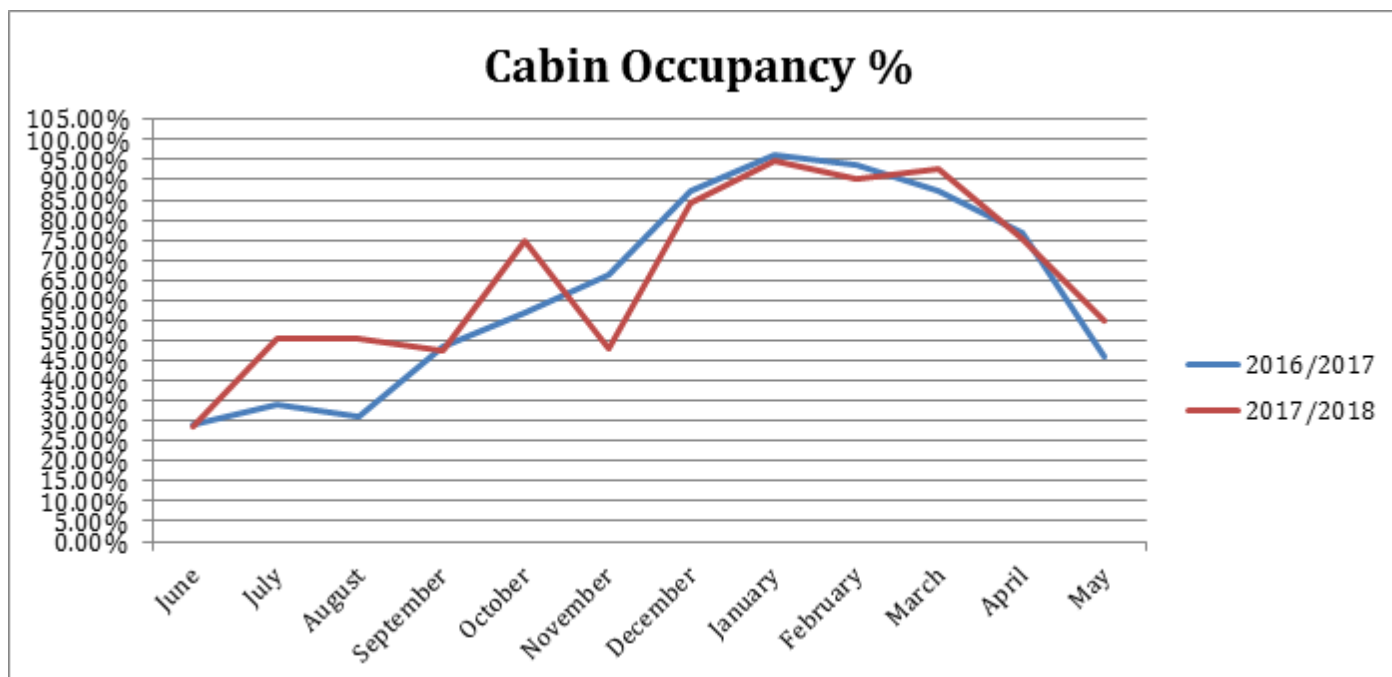
The final cabin plans are now in, and we are very happy with these. We asked Trevor Murray (Modello Architecture) to work with us on the camp entrance/ storeroom project (which we already have concept drawings for) as well as the new cabins, in a project management capacity. Once Trevor has returned from holiday we will have further details on this.

Kind regards

Anton & Lucy

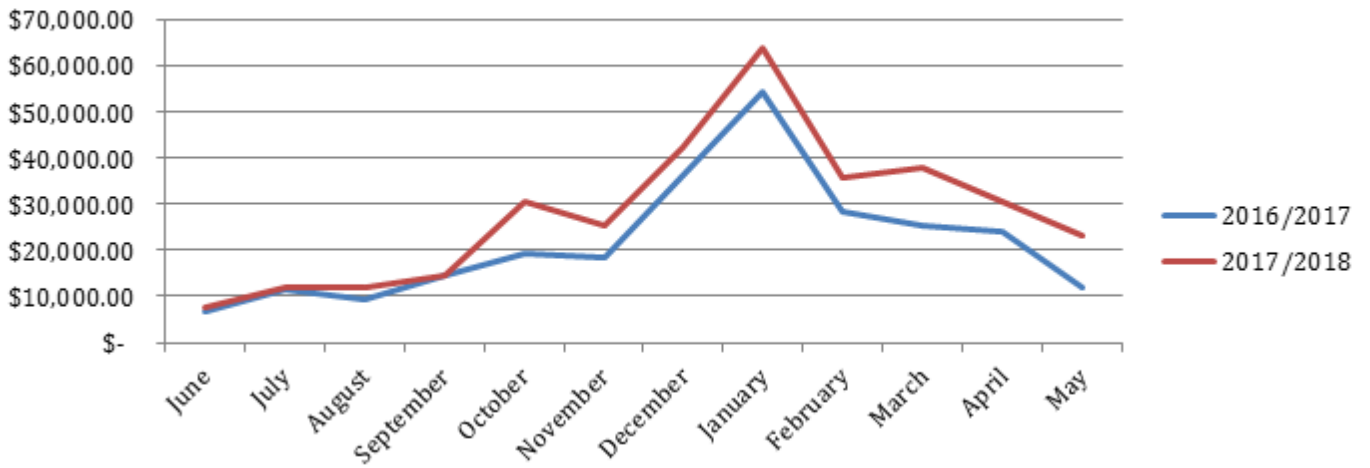
## Occupancy and Revenue – May 2018

### Cabin Occupancy

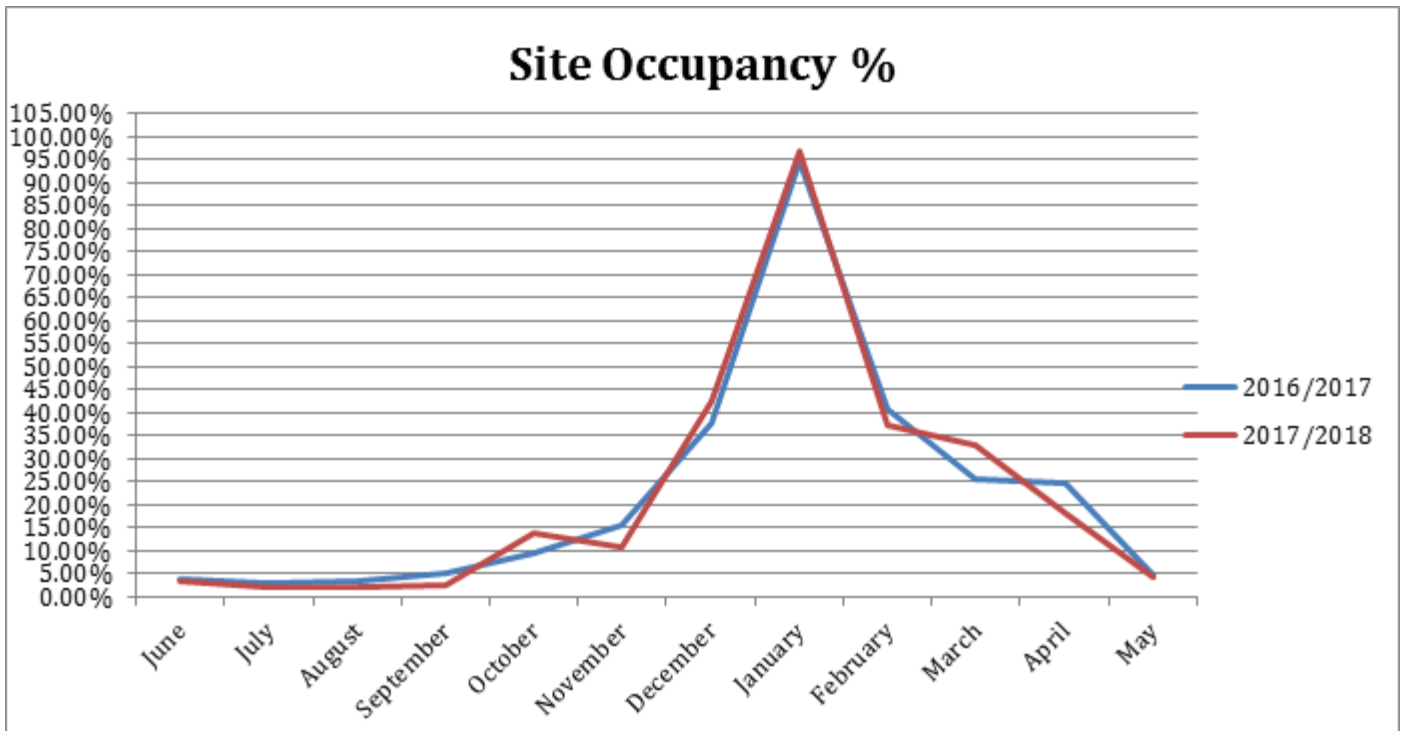


### Cabin Revenue

## Revenue - Cabins (monthly)

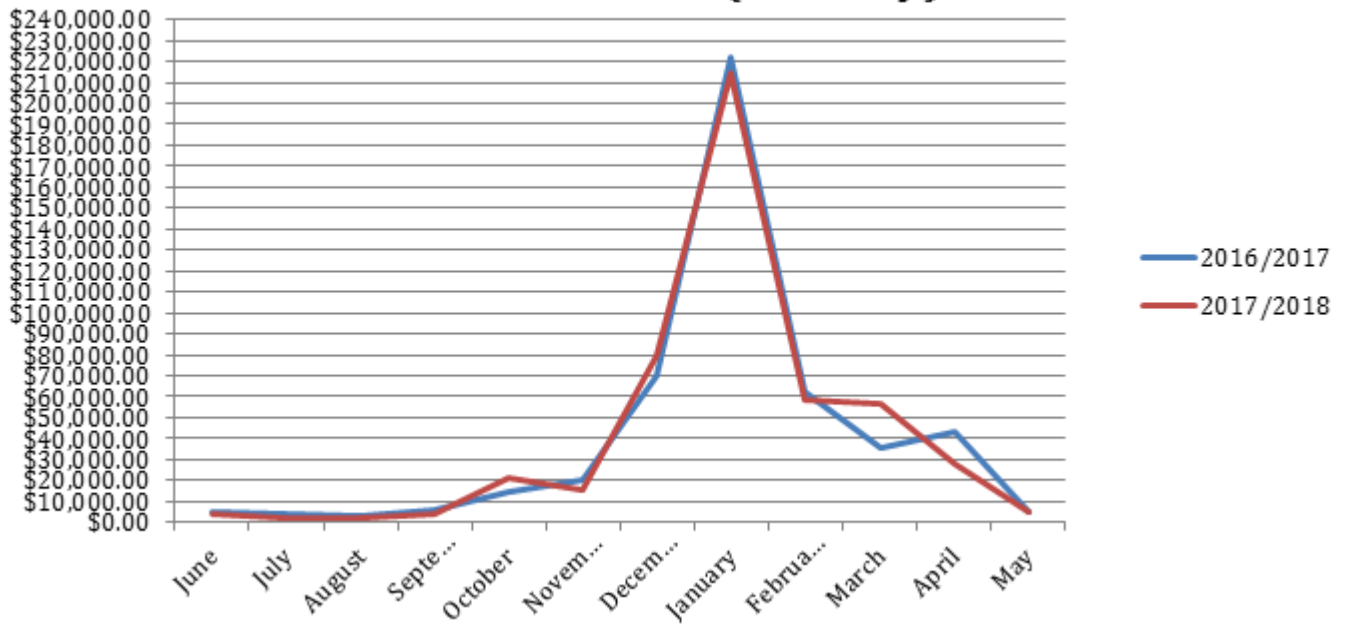


## Site Occupancy



## Site Revenue

## Revenue - Sites (monthly)



Cabin revenue and occupancy for May 2018 saw a significant increase when compared YOY with 2017. This is due to the 2 bedroom self-contained cabins. Revenue and occupancy levels sites were similar to the previous year.